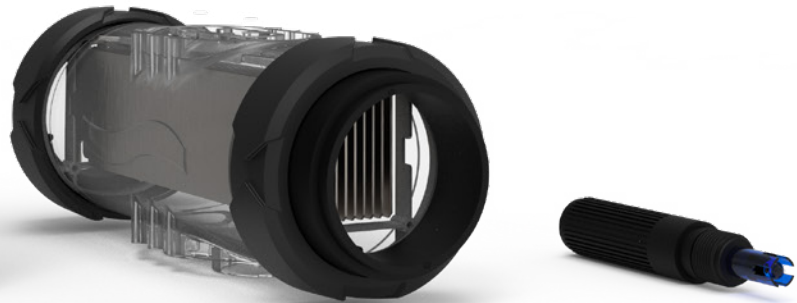




Benefits

- **Smart Reverse exclusive technology:** self cleaning cell according to water hardness without any adjustment nor settings
- **Smart pH:** predictive regulation based on history for a perfectly stable pH
- **In line or dashboard display**
- **Low Salt / Normal Salt mode** (depending on model)
- **Integrated silent dosing pump**
- **Very high quality pH probe, factory tested and calibrated**
- **Bluetooth remote control** with e-Pool® app
- **Pool Terre grounding electrode included**
- **Compatible with new European regulation** (N°2019/1148) pH correcting agent adjustable concentration
- **Transparent accessories holder**



Features

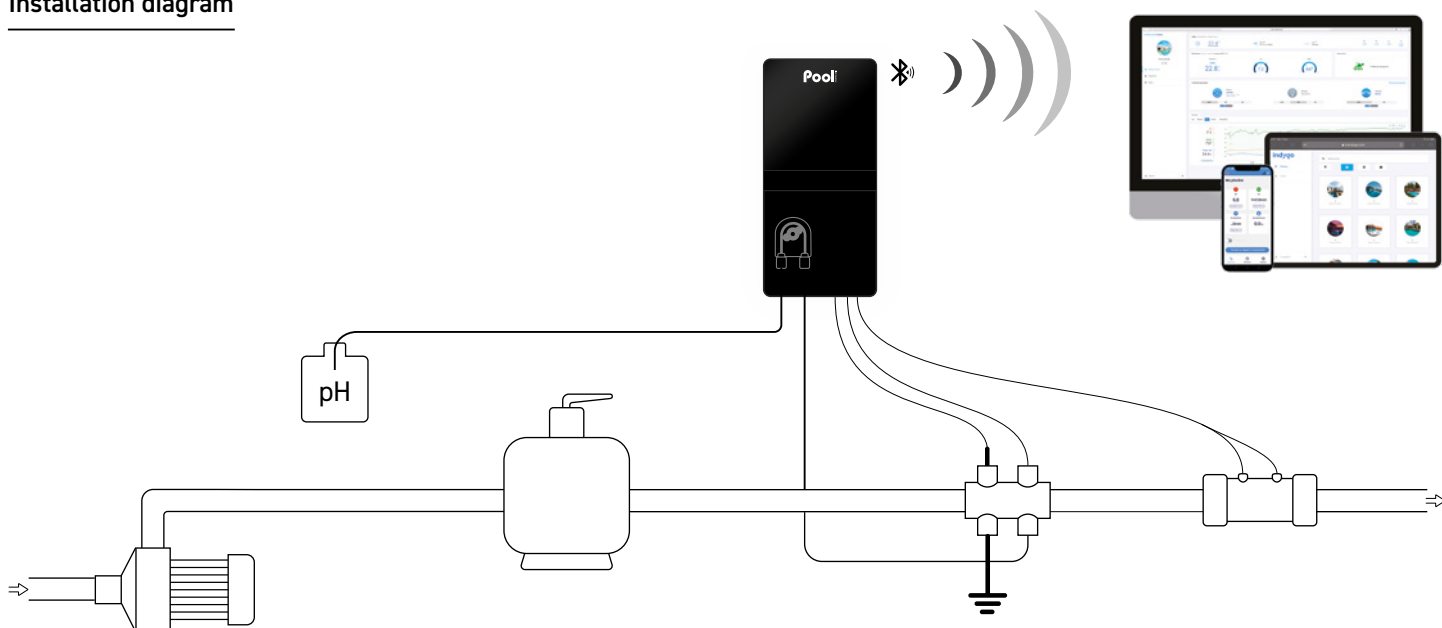
- **Smart Power:** current monitoring ensuring stable production
- **Smart Reverse polarity inversion:** self cleaning cell according to water hardness without any adjustment nor settings
- **Predictive and proportional pH regulation** in acid (pH-) or basic (pH+) mode
- **Low mode to reduce chlorine production,** when cover closed or bubbles cover installed
- **Superboost mode:** 125% superchlorination for up to 48 hours to overcome an increased need of disinfectant
- **Automatic winterization and restart from 15C°**
- **Multilingual communication interface**
- **Safeties:** unreached set point, pH set point overrun and overfeeding
- **Display of pool salt level, water temperature and cell lifespan**
- **Multilingual alarm message:** written message display of malfunction cause
- **Log of events**
- **Self-diagnosis programme for easy maintenance**

Model	Pool volume* (m ³)	Chlorine production (g/h)	Reference
Poolsquad NPS 8	40	8	ELPH20NPSP-G4NM08
Poolsquad NPS 12	60	12	ELPH20NPSP-G4NM12
Poolsquad NPS 16	NS 80 / LS 60	NS 16 / LS 12	ELPH20NPSP-G4HX16
Poolsquad NPS 23	NS 120 / LS 80	NS 23 / LS 16	ELPH20NPSP-G4HX23
Poolsquad NPS 30	NS 160 / LS 120	NS 30 / LS 23	ELPH20NPSP-G4HX30

*In hot climates, reduce the volume by 20% - NS : Normal Salt (5 g/l) / LS : Low Salt (1,5 g/l)

Technical specifications	
Display	LCD 2 lines
pH pump flow (l/h)	1,8
Corrective solution	pH- or pH+
Type of pH regulation	predictive
Set point adjustment	6,8 to 7,6
pH probe calibration	2 points pH 7 & pH 10
pH probe	Black
Polarity inversion adjustment	automatic Smart Reverse
Cell installation	in line
Cell orientation	horizontal or vertical
Cell length (mm)	225
Maximum pressure in the cell (bar)	2
Maximum flow in the cell (m ³)	22 or By-pass
Control panel size (mm)	W 140 x H 300 x D 97

Installation diagram



Content

- Control box
- Chlorination cell
- Cell cable (2 m)
- pH probe Black
- Calibration solutions pH 7 & pH 10
- Probe holder, injection connector
- Accessories holder with plugs
- Low water/salt/temperature sensor
- Pool Terre grounding electrode
- Salt and water hardness analysis kit
- Power cable (2 m)
- Collar diam 63 mm x2
- Reducer 63/50 mm x4 (x2 models <80 m³)
- Wall support (with screws)
- User manual

Options

- Independent flow switch
- Empty pH can sensor
- e-Pool® Connect connected Pool kit
- Collar diameter 50 mm x2

Warranties

2 years Box

2+2 years Cell

*See a retailer

3 years Probe pH Black

Pool squad® Pro

Pool
TECHNOLOGIE

Saltwater chlorinator + pH regulator
+ ORP controller



Benefits

- **Smart Reverse exclusive technology:** self cleaning cell according to water hardness without any adjustment nor settings
- **Smart pH:** predictive regulation based on history for a perfectly stable pH
- **In line or dashboard display**
- **Low Salt / Normal Salt mode** (depending on model)
- **Integrated silent dosing pump**
- **Very high quality pH and ORP probes**, factory tested and calibrated
- **Bluetooth remote control** with e-Pool® app
- **Pool Terre grounding electrode included**
- **Compatible with new European regulation** (N°2019/1148) pH correcting agent adjustable concentration
- **Transparent accessories holder**



Features

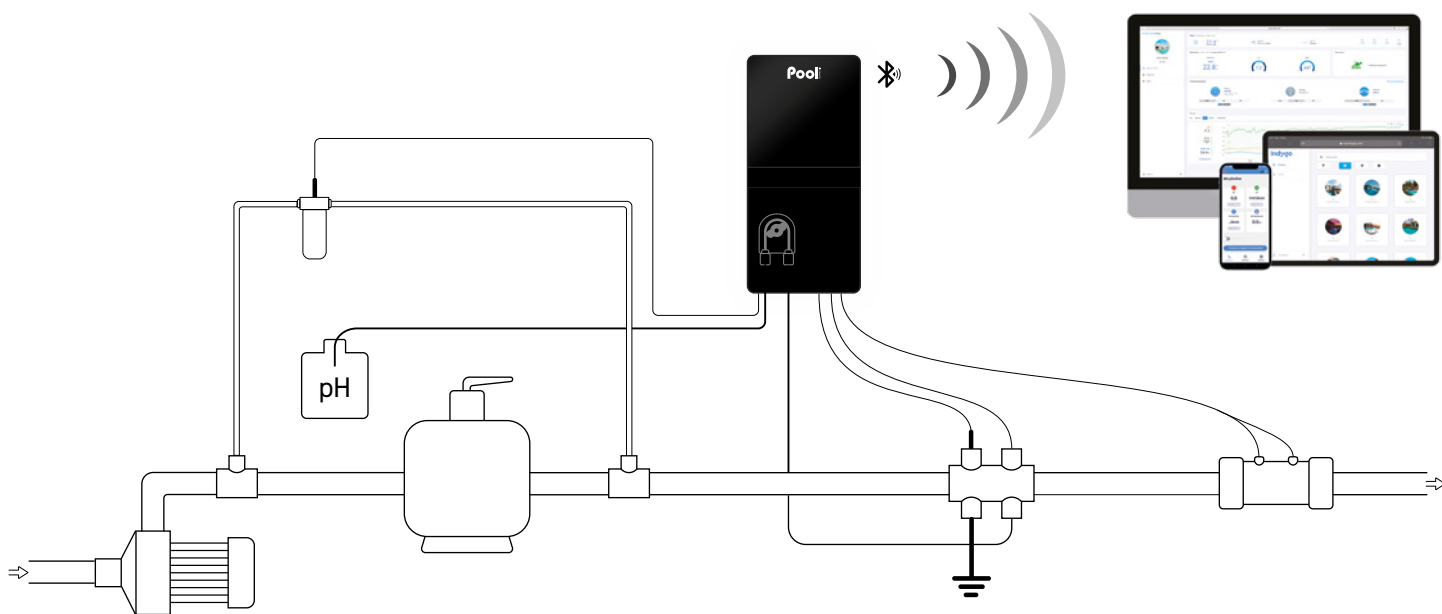
- **Smart Power:** current monitoring ensuring stable production
- **Smart Reverse polarity inversion:** self cleaning cell according to water hardness without any adjustment nor settings
- **Predictive and proportional pH regulation** in acid (pH-) or basic (pH+) mode
- **Chlorine production control by ORP probe**
- **Low mode to reduce chlorine production**, when cover closed or bubbles cover installed
- **Superboost mode:** 125% superchlorination for up to 48 hours to overcome an increased need of disinfectant
- **Automatic winterization and restart from 15C°**
- **Multilingual communication interface**
- **Safeties:** high and low ORP values, unreached set point, pH set point overrun and overfeeding
- **Display of pool salt level, water temperature, cell lifespan and ORP value in mV**
- **Log of events**
- **Self-diagnosis programme for easy maintenance**

Model	Pool volume* (m ³)	Chlorine production (g/h)	Reference
Poolsquad Pro NPS 8	40	8	ELP020NPSP-G4NM08
Poolsquad Pro NPS 12	60	12	ELP020NPSP-G4NM12
Poolsquad Pro NPS 16	NS 80 / LS 60	NS 16 / LS 12	ELP020NPSP-G4HX16
Poolsquad Pro NPS 23	NS 120 / LS 80	NS 23 / LS 16	ELP020NPSP-G4HX23
Poolsquad Pro NPS 30	NS 160 / LS 120	NS 30 / LS 23	ELP020NPSP-G4HX30
Panel mounting ORP option			OPT20PANORP

*In hot climates, reduce the volume by 20% - NS : Normal Salt (5 g/l) / LS : Low Salt (1,5 g/l)

Technical specifications	
Display	LCD 2 lines
ORP set point adjustment (mV)	200 to 900
Calibration ORP probe	1 point 475 mV
ORP probe	ORP Gold
pH pump flow (l/h)	1,8
Corrective solution	pH- or pH+
Type of regulation	predictive
pH set point adjustment	6,8 to 7,6
Calibration pH probe	2 points pH 7 & pH 10
pH probe	Black
Polarity inversion adjustment	automatic Smart Reverse
Cell installation	in line
Cell orientation	horizontal or vertical
Cell length (mm)	225
Maximum pressure in the cell (bar)	2
Maximum flow in the cell (m ³)	22 or By-pass
Maximum water temperature (°C)	40
Control panel size (mm)	W 140 x H 300 x D 97

Installation diagram



Content

- Control box
- Chlorination cell
- Cell cable (2 m)
- pH probe Black
- Calibration solutions pH 7 & pH 10
- ORP probe Gold
- ORP calibration solution 475 mV
- Paddle clamp x2 (diam 50 mm)
- Probe holder, injection connector
- ORP probe Gold & ORP measure chamber kit
- Accessories holder with plugs
- Low water/salt/temperature sensor
- Pool Terre grounding electrode
- Salt and water hardness analysis kit
- Power cable (2 m)
- Collar diam 63 mm x2
- Reducer 63/50 mm x4 (x2 models <80m³)
- Wall support (with screws)
- User manual

Options

- Independent flow switch
- ORP mounting panel
- Empty pH can sensor
- e-Pool[®] Connect connected Pool kit
- Collar diameter 50 mm x2

Warranties

2 years	Box
2+2* years	Cell
* See a retailer	
3 years	Probe pH Black
1 year	Probe ORP Gold

Poolsquad® Ampero

Pool
TECHNOLOGIE

Saltwater chlorinator + pH regulator
+ Amperometric controller



Optional panel mounting



Benefits

- **Smart Reverse exclusive technology:** self cleaning cell according to water hardness without any adjustment nor settings
- **Smart pH:** predictive regulation based on history for a perfectly stable pH
- **In line or dashboard display**
- **Low Salt / Normal Salt mode** (depending on model)
- **Integrated silent dosing pump**
- **Very high quality Black pH and Cl Salt probes**, factory tested and calibrated
- **Bluetooth remote control** with e-Pool® app
- **Pool Terre grounding electrode included**
- **Compatible with new European regulation** (N°2019/1148) pH correcting agent adjustable concentration
- **Transparent accessories holder**

Features

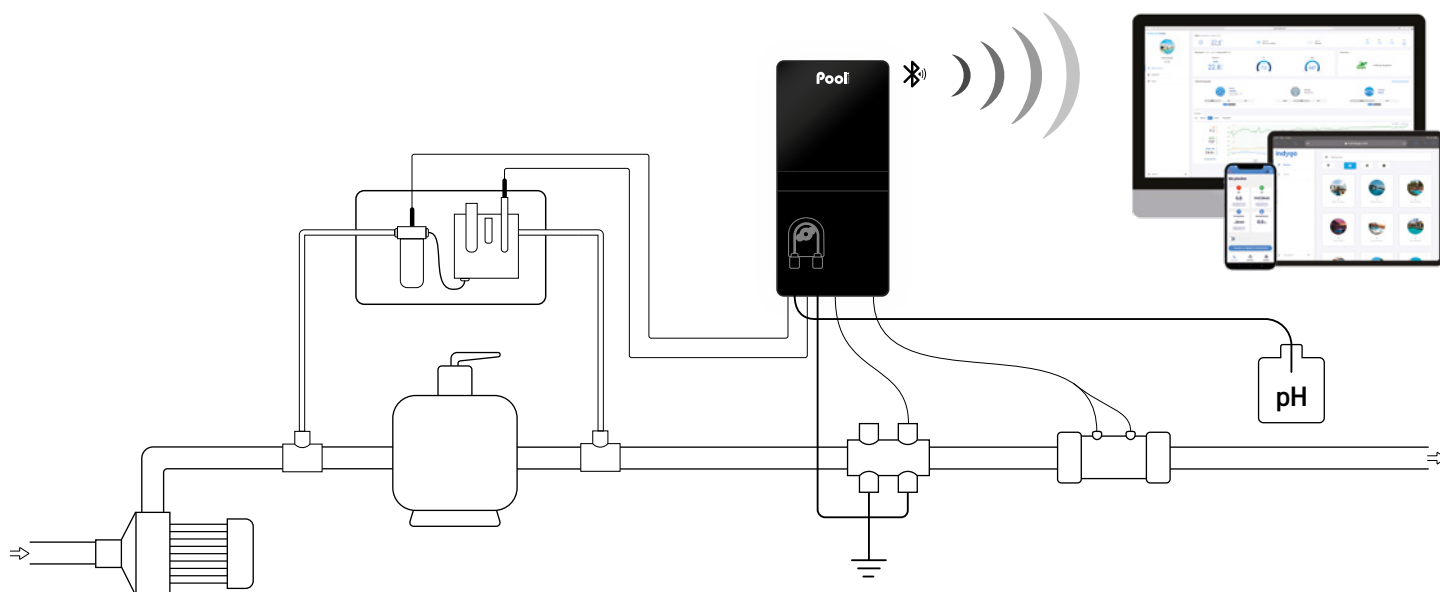
- **Smart Power:** current monitoring ensuring stable production
- **Smart Reverse polarity inversion:** self cleaning cell according to water hardness without any adjustment nor settings
- **Predictive and proportional pH regulation** in acid (pH-) or basic (pH+) mode
- **Chlorine regulation by efficient free chlorine probe specifically designed for saltwater**
- **Low mode to reduce chlorine production**, when cover closed or bubbles cover installed
- **Superboost mode:** 125% superchlorination for up to 48 hours to overcome an increased need of disinfectant
- **Automatic winterization and restart from 15C°**
- **Multilingual communication interface**
- **Safeties:** high and low Ampero value, unreachd set point, pH set point overrun and overfeeding
- **Display of pool salt level, water temperature, cell lifespan and average free chlorine rate in ppm**
- **Log of events**
- **Self-diagnosis programme for easy maintenance**

Model	Pool volume* (m³)	Chlorine production (g/h)	Reference
Poolsquad Ampero NPS 8	40	8	ELPA20NPSP-G4NM08
Poolsquad Ampero NPS 12	60	12	ELPA20NPSP-G4NM12
Poolsquad Ampero NPS 16	NS 80 / LS 60	NS 16 / LS 12	ELPA20NPSP-G4HX16
Poolsquad Ampero NPS 23	NS 120 / LS 80	NS 23 / LS 16	ELPA20NPSP-G4HX23
Poolsquad Ampero NPS 30	NS 160 / LS 120	NS 30 / LS 23	ELPA20NPSP-G4HX30
Panel mounting ampero option			OPT20PANAMP

*In hot climates, reduce the volume by 20% - NS : Normal Salt (5 g/l) / LS : Low Salt (1,5 g/l)

Technical specifications	
Display	LCD 2 lines
Free chlorine set point adjustment	0,1 to 5 ppm
Amperometric probe	Chlore Salt
pH pump flow (l/h)	1,8
Corrective solution	pH- or pH+
Type of regulation	predictive
pH set point adjustment	6,8 to 7,6
Calibration pH probe	2 points pH 7 & pH 10
pH probe	Black
Polarity inversion adjustment	automatic Smart Reverse
Cell installation	in line
Cell orientation	horizontal or vertical
Cell length (mm)	225
Maximum pressure in the cell (bar)	2
Maximum flow in the cell (m³)	22 or By-pass
Maximum water temperature (°C)	40
Control panel size (mm)	W 140 x H 300 x D 97

Installation diagram



Content

- Control box
- Chlorination cell
- Cell cable (2 m)
- pH probe Black
- Calibration solution pH 7 & pH 10
- Cl Salt probe
- Probe holder, injection connector
- Ampero measure chamber with connection kit
- Accessories holder with plugs
- Low water/salt/temperature sensor
- Pool Terre grounding electrode
- Salt and water hardness analysis kit
- Power cable (2 m)
- Collar diam 63 mm x2
- Reducer 63/50 mm x4 (x2 models <80 m³)
- Wall support (with screws)
- User manual

Options

- Independent flow switch
- Ampero mounting panel
- Empty pH can sensor
- e-Pool® Connect connected Pool kit
- Collar diameter 50 mm x2

Info

Amperometric regulation requires a professional expertise. The sale of Ampero regulation device is exclusively reserved to pool specialists who have been specifically trained on this device. Please contact your sales representative to ask for a training.

Warranties

2 years	Box
2+2 years	Cell
* See a retailer	
3 years	Probe pH Black
1 year	Probe Cl Salt